



Model: AC Top Drives Serial #: N/A	Mar. 28, 2014
Product Bulletin # TDS-139	

PanelView Unit Replacement (Standalone Top Drive System)

Issue

Allen Bradley no longer manufactures the following Human Machine Interface (HMI) screen models:

- PanelView 1000
- PanelView Plus 1250 with Remote I/O Communication.

Damaged units used in a standalone top drive must be upgraded to the more recent PanelView Plus 6 1250 model. Follow the steps below to identify the existing unit and select the parts required to complete the upgrade.

Refer to the diagram on Figure 5 on page 6 for additional information.

Requirements

The new screen will be shipped already programmed, therefore the following information is required.

1. Send to RigLine Support 24/7™ the following:
 - Top drive serial number
 - PLC program running the top drive

Ordering the new PanelView Unit

2. Order the required new PanelView Plus 6 1250 unit listed below.

Table 1: PanelView Plus 6 1250

Qty	Part Number	Description
1	AY18938	PanelView Plus 6 1250

Identifying Existing PanelView Model

3. What color is the bezel of the existing PanelView unit?
 - a. Black (labeled PanelView 1000). See Figure 1 below.

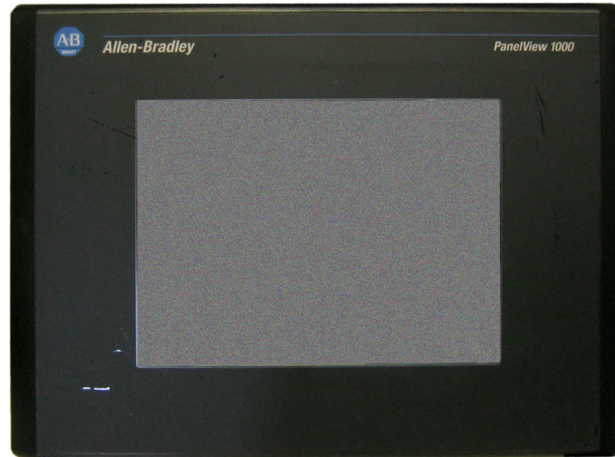


Figure 1: PanelView 1000

When replacing a PanelView 1000 order the following parts:

Table 2: Power Supply and Mounting Hardware

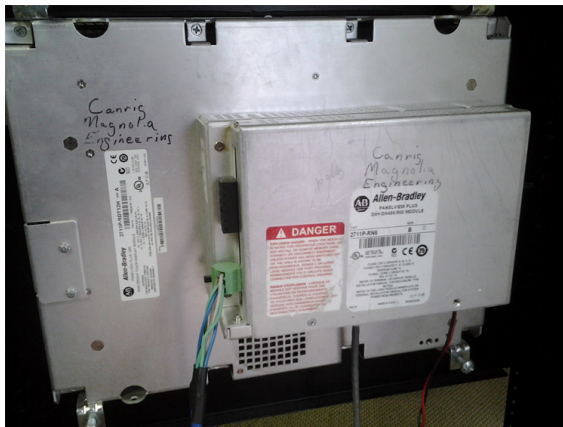
Qty	Part Number	Description
1	E11409	Power Supply 24 VDC
1	E11337	DIN Rail, 4"
2	RH-P-10-32-0050-SS	10-32 Screws
2	LW-10-ET-SS	Lock Washers
2	E16-1102-010	End Brackets
2	LN-10-32	Lock Nuts

Continue to "Identifying Installed Processor" on page 4.

b. Gray (labeled PanelView Plus 1250). See Figure 2 below.



Figure 2: PanelView Plus 1250



PanelView Plus 1250
Two modules in the back



PanelView Plus 6 1250
Only one module in the back

Figure 3: Back view of HMI Displays

If the existing unit is a PanelView Plus 1250 (display on the left on Figure 3) continue to “Identifying Installed Processor” on page 4.

If the existing unit is a PanelView Plus 6 1250, part number AY18938 (display on the right on Figure 3) the procedure is complete. No additional parts are required.

Identifying Installed Processor

The processor SLC 5/03 will not work with the new PanelView Plus 6 1250, therefore a new processor must be ordered. Follow the steps below to identify if a new processor is required:

4. What processor is installed?
 - a. SLC 5/03



Figure 4: SLC 5/03 Processor

When replacing a SLC 5/03 processor unit order the following parts:

Table 3: SLC 5/05 Processor

Qty	Part Number	Description
1	N10150	SLC 5/05 Processor

Continue to “Selecting Required Cable Kit” on page 5.

- b. SLC 5/05

No extra parts required. Continue to “Selecting Required Cable Kit” on page 5.

Selecting Required Cable Kit

The location of the building that contains the processor determines the length of the required cable kit:

5. Where is the building (with the processor) installed?

a. On the ground

Order the following kit:

Table 4: 265' Cable Kit

Qty	Part Number	Description
1	AY20104-265	Kit, Cable, PV1250 Plus 6 upgrade. w/265' Cable

The procedure is complete.

b. On the rig's deck

Table 5: 160' Cable Kit

Qty	Part Number	Description
1	AY20104-160	Kit, Cable, PV1250 Plus 6 upgrade. w/160' Cable

The procedure is complete.

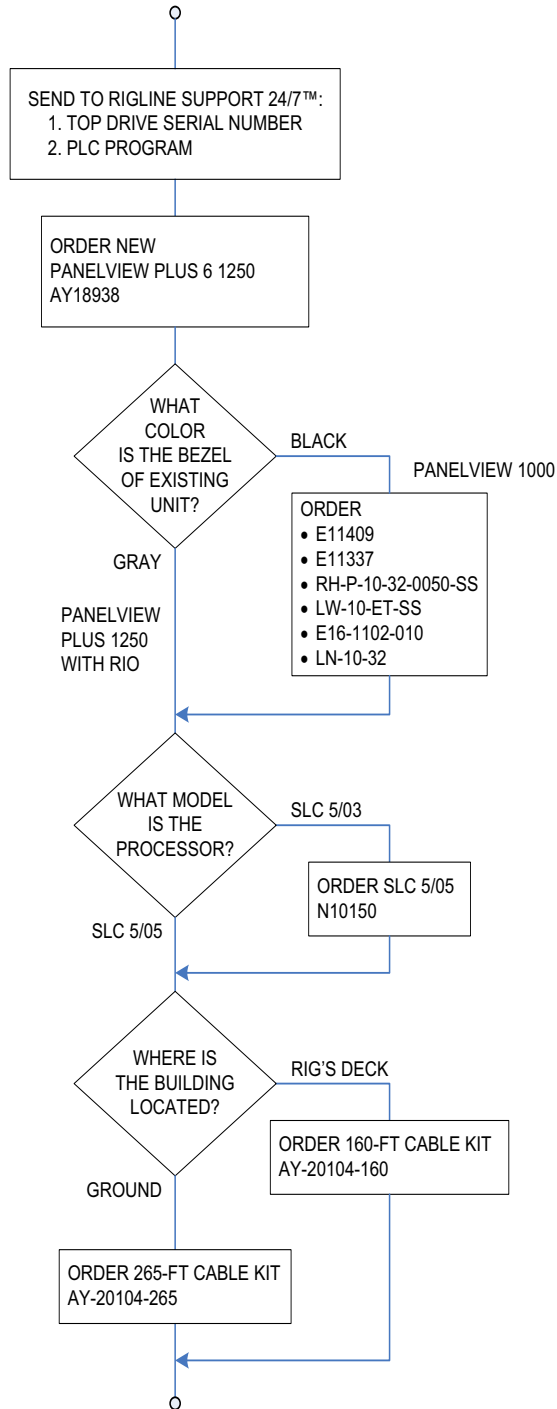


Figure 5: Procedure Flowchart